

PE0402

Evaluation Kit for CMX704x and CMX714x

The PE0402 Platform Evaluation Kit is designed to assist in the evaluation and application development of the CMX704x/CMX714x range of *FirmASIC* products.

Features

- On-board Access to all Target IC Signals, Commands and Data
- Serial Flash Option for Function Image with In-circuit Programming
- On-board Supply Regulators Operate from a Single 5-Volt Supply
- Command and Control by PC via the PE0003 Universal Interface Card or User's μ C Development Application or Emulator
- 19.2MHz Oscillator, 6.144MHz Xtal or External Clock Input to Target IC

Supply Requirement

- 5 V

Applications

- Evaluation of CMX704x and CMX714x IC Products

For further information, please refer to the 'Design Resources' section on the CMX704x and CMX714x FirmASIC™ product pages at cmlmicro.com

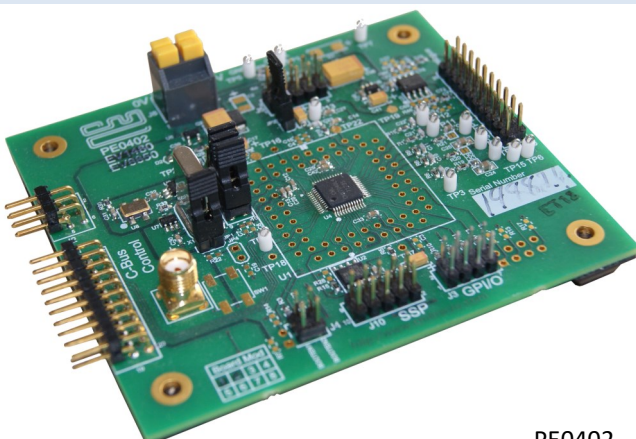
The board also incorporates all of the necessary power-supply regulation facilities for operation from a single 5 volt supply. The board is fitted with a C-BUS connector allowing the PE0402 to be operated by connection to either of the two C-BUS ports on a CML PE0003 Universal Interface Card, and used with the associated PC GUI software, or by direct connection between the CMX7040 C-BUS and the user's IC development application or emulation system.

The CMX704x Function Image (FI) can be loaded, on power-up, directly into the on-board target IC using the PE0003 interface or the user's system.

Alternatively, it can be automatically loaded from the on-board serial memory, on power-up. In this case, the on-board serial memory has to be preloaded with the FI by using a suitable third party programmer or by using the 'Program Serial Memory' tab on the PE0003 GUI software. This software is available from the CML website. Function images suitable for evaluation of the CMX704x and CMX714x ranges of products can be downloaded from the relevant product area on the CML Technical Portal.

The PE0402 is a back-compatible replacement for the PE0401, with the following enhancements:

- Pad-ring gives easy access to all CMX704x/CMX714x pins
- Group functions on individual headers
- Selectable clock sources:
 - On-board 19.2MHz oscillator module
 - 6.144MHz Xtal
 - External clock (SMA) injection point
- Multiple 'probe attach' points
- AC bypass facility on signal inputs
- Optional power source from PE0003



PE0402

WHAT TO DO NEXT

Visit: www.cmlmicro.com

Find: [Distributor](#)

CML Microcircuits Benefits

Faster time to market

Developing proven high performance and field tested ASSP ICs, CML is helping engineers to cope with increasing pressure in delivering shorter project design cycles.

Design flexibility

CML's *FirmASIC*® reconfigurable technology with the use of a Function Image upload enables a single hardware platform to be used for multiple communications systems.

High Quality

With 100% of products being tested before shipping, customers are assured of the highest reliability.

Product Longevity

Designing with CML products, manufacturers are rewarded with longer product life cycles and a stable BOM, ensuring minimum engineering costs and maximum profit.

Low Power

Being at the forefront of low power chip technology, manufacturers can develop smaller equipment with extended battery life.

Superior Support

Internal and field based applications teams worldwide provide focused customer support to ease the development process.

www.cmlmicro.com

United Kingdom
United States
Singapore

Tel: +44 (0) 1621 875500
Tel: +1 336 744 5050
Tel: +65 62888129

email: sales@cmlmicro.com
email: us.sales@cmlmicro.com
email: sg.sales@cmlmicro.com